



Pinner Wood School Strategy

Learning as we grow, growing as we learn

December 2020



Our vision – where we want to get to

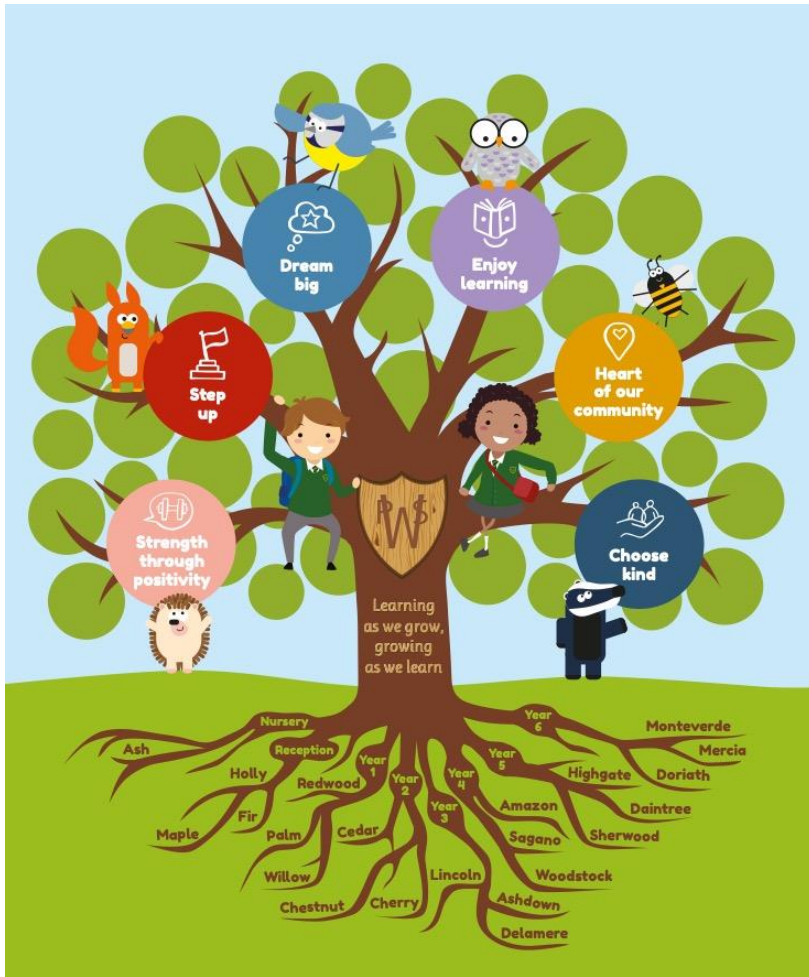
Our vision is to be at the heart of our community with our own style of education, encouraging each and every child to 'dream big' and to provide the opportunities and foundations for them to be successful and fulfilled people.

We embrace individualism and diversity in all we do and we offer all our children the experience and discovery of a broad, rich and deep curriculum.

It is important to us to build a love of learning for our children, both in and out of the class room, while embracing a variety of teaching techniques and approaches to maximise learning.

Our children will become confident, curious and resilient, ready for the next stage of their educational journey.





Choose Kind:

Barney Badger says- ‘Be thoughtful, considerate, forgiving and generous. Treat people how you would like to be treated. Be understanding, empathetic and go out of your way to help others. Be kind to yourself; make sensible and healthy choices to enable you to live life to the full.

Step up:

Sammy Squirrel says, “Be you! Be proud of who you are! Take responsibility for your actions, stand by your ideas and support our school. Go the extra mile to make Pinner Wood a better place -because of you.”

Strength Through positivity:

Hari Hedgehog says, “Be resilient in mind and body. Keep going when things get tough. Be optimistic and know that you can overcome challenges. Be solution –focused and forward thinking. You can do it!”

Heart of Our Community

Betty Bee says, “Celebrate being part of our diverse community and contribute what you can to make Pinner Wood a special place to be. Know you belong to our community, all of us together as one.”

Dream Big

Bonnie Bird says, “Be ambitious and interested in your future. Be curious, dedicated and unstoppable. Aim to create an exciting and beautiful world for us to live in together. Reach for the stars!”

Enjoy Learning

Ozzie Owl says, “Have fun whilst enjoying learning- wonder at the discovery of new things and delight in having new experiences. As we grow we learn- and as we learn

Our Strategic Priorities

(How are we going to get there?)

1. To build our place at the heart of our wider community

2. To embed a holistic and integrated curriculum to encompass the head, heart and hands

3. To further develop our diverse school community that looks after our pupils and staff and promotes the wellbeing of all

4. To create a school that utilises and adapts quickly to the technology that is available

5. To create a sustainable and responsible school, ready to protect the future of our children



Strategic Plan 2021 -24 (Detail plans in SIP / GB committee plans)

Strategic priority	Targets
1. To build our place at the heart of our wider community	<ul style="list-style-type: none"> • Build our profile and PR • Cluster and local engagement • Parent community involvement • Work with and develop governor/Chair cluster
2. To embed a holistic and integrated curriculum to encompass the head, heart and hands	<ul style="list-style-type: none"> • Project based curriculum – stunning start etc • Implementation of wider skills e.g., Oracy • Embed IT into all curriculum • Development of global and diverse curriculum • Focus on Core skills (English and Maths) and keep outcomes high. • Ensuring every child makes progress – focus on SEN and those at a disadvantage.
3. To further develop our diverse school community that looks after our pupils and staff and ensures the well being of all	<ul style="list-style-type: none"> • Develop staff well being programme • Enhancement of pupil well being programme and all round support • Staff CPD and succession • Outstanding / Quality of teaching
4. To create a school that utilises and adapts quickly to the technology that is available	<ul style="list-style-type: none"> • Purchase laptops for all teachers to allow for flexible and implementation of home learning • Long term IT Vision - Remove computing suite and move to laptop based activity • One iPad between two children • Efficiency and use of technology for the school office
5. To create a sustainable and responsible school, ready to protect the future of our children	<ul style="list-style-type: none"> • Forward looking programme of building needs and improvements • Reduction of waste and increased sustainability • Financial sustainability and planning – ensuring the strategy is affordable • Develop a more global curriculum • Governor succession planning and LEAD governor roles

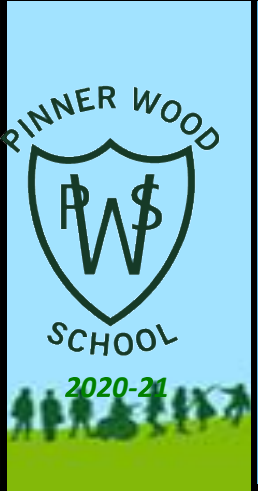
Pinner Wood School SIP 2020/21

The Quality of Education	
<p>Foundation Curriculum—</p> <p>Ensure we are providing a broad and balanced curriculum with purposeful, engaging, knowledge-based learning opportunities for all.</p>	<p>IT</p> <p>Continue to build upon and develop IT skills.</p> <p>Build and develop a remote learning platform to support home and remote learning.</p>
<p>Reading—</p> <p>Ensure we are fostering a love of reading across school which results in high levels of attainment and progress. 'Every Child a reader by end of Key Stage 1'</p>	<p>Oracy</p> <p>To train staff and develop oracy across the school.</p> <p>Prioritising talking and listening across the curriculum.</p> <p>Developing pupils oracy.</p>

Behaviour and Attitudes	
<p>PW Values</p> <p>Launch and embed new PW values across everything we do at PW</p>	<p>Focus on Independent learning?</p> <p>Homework</p> <p>In school</p> <p>TA and keyworker support</p>
<p>Relationships Education</p> <p>Embed new scheme of work (Jigsaw) with a focus on safeguarding and making the right choices. (PSHE Plan)</p>	<p>Attendance</p> <p>Work with families to ensure all pupils can return to school after the pandemic.</p>

Outcomes
<ul style="list-style-type: none"> All children back in school safely, confidently and learning 'No child misses out' gaps identified (in all aspects) and strategies in place to fill them.

Personal Development	
<p>Well being and Emotional Health</p> <p>A programme of well being and emotional health to give pupils the emotional literacy to discuss and express how they are feeling.</p>	<p>Project Based Learning</p> <p>Continue to develop project based learning at Pinner Wood so that learners are developing 'life skills' alongside core knowledge through their learning across the curriculum.</p>
<p>Diversity</p> <p>To reflect on our current practice, teaching and resources to ensure that they are reflective of our diverse community.</p>	<p>Extend/promote Cultural Capital—</p> <p>with experiences in school and links and recommendations made through new style Homework on Seesaw</p>



Leadership and Management	
<p>New Leaders</p> <p>Induct new leaders and year group teams—so that they are effective and make a positive impact across the school.</p>	<p>Middle Leaders</p> <p>To continue to train and develop middle leaders so that they have a good understanding of how their subject has a positive impact across the school.</p>
<p>Building Back</p> <p>Establish new and safe practices so that everyone feels confident and can achieve. Lead all in identifying-positive learning points from last year</p>	<p>Linking with other Schools</p> <p>To continue to network and work with other schools to increase our capacity e.g. cluster schools, leadership training, EYFS</p>

Commitment to Well Being— pupils and staff